



CERTIFICATE

No. Z1 04 09 29615 011

Holder of Certificate: pba s.r.l.

Via Enrico Fermi n.1
36056 Tezze Sul Brenta (VI)
Italy

Certification Mark:



Product:

**Sanitary Aids for Disabled Persons
Handles and shower seats**

The product was tested on a voluntary basis and complies with the essential requirements. The certification mark shown above can be affixed on the product. See also notes overleaf.

Test report no.:

70071655

Date, 2004-09-23



Page 1 of 3



CERTIFICATE

No. Z1 04 09 29615 011

Model(s): Handles, shower seats, shower splash-guard, supporting folding handles, wall supporting handles, angle handles, shower hand rails, hanging up seats as well as floor-wall supporting handles Series "Program 400-NY"

Parameters:

cover material:
tube of nylon, Ø 36 mm x 3 mm

colour:
black, green, white, yellow, grey, blue, red

tube inside:
aluminium Ø 30 mm x 3,2 mm (except: handle 445P pedestal
varnished carbon steel, colour black)

products with marking *A: polyurethane foam arm rest

further technical data: see enclosure

Tested according to: EN 12182:1999

Production Facility(ies): 29615



Enclosure to certificate no. Z1 04 09 29615 011

| No. | Type | max. Dimensions | Nominal load | Tested version |
|-----|----------------------------------------------------------------|----------------------------|--------------|----------------|
| 1 | 422, /M, /L, /LA, angle handles | 400 mm x 1160 mm | 150 kg | 422/LA |
| 2 | 423/B, /BL, handles | 1570 mm | 150 kg | 423/BL |
| 3 | 424, /L, /LA, shower hand rails | 760 mm x 760 mm x 1160 mm | 150 kg | 424/LA |
| 4 | 427, angle handles | 500 mm x 300 mm | 150 kg | 427 |
| 5 | 428, angle handles | 500 mm x 300 mm | 150 kg | 428 |
| 6 | 433, shower hand rails | 1570 mm x 820 mm | 150 kg | 433 |
| 7 | 438, handles | 1420 mm | 150 kg | 438 |
| 8 | 438/B, handles | 1860 mm | 150 kg | 438/B |
| 9 | 439, floor-wall supporting handles | 830 mm x 310 mm x 160 mm | 150 kg | 439 |
| 10 | 440, /A, /B, /C /D, handles | 1170 mm | 150 kg | 440/D |
| 11 | 440/L, handles | 400 mm x 250 mm | 150 kg | 440/L |
| 12 | 441, /L, /LL, wall supporting handles | 850 mm x 174 mm x 160 mm | 120 kg | 441/LL |
| 13 | 441/A, /LA, /LLA, wall supporting handles | 850 mm x 174 mm x 160 mm | 120 kg | 441/LLA |
| 14 | 442, /M, /L, shower hand rails | 1160 mm | 150 kg | 442/L |
| 15 | 442/B, /BL, shower hand rails | 1760 mm x 760 mm | 150 kg | 442/BL |
| 16 | 443, shower hand rails | 1160 mm x 760 mm x 820 mm | 150 kg | 443 |
| 17 | 443/B, /BL, shower hand rails | 760 mm x 1185 mm x 1160 mm | 150 kg | 443/BL |
| 18 | 444, /L, floor-wall supporting handles | 700 mm x 830 mm x 160 mm | 150 kg | 444/L |
| 19 | 444/A, /LA, floor-wall supporting handles | 700 mm x 830 mm x 160 mm | 150 kg | 444/LA |
| 20 | 445, /T, /L, supporting folding handles | 850 mm x 210mm | 120 kg | 445/L |
| 21 | 445/TA, /A, LA, supporting folding handles | 850 mm x 210mm | 120 kg | 445/LA |
| 22 | 445/GT, /G, /GL, supporting folding handles | 850 mm x 210mm | 120 kg | 445/GL |
| 23 | 445/GTA, /GA, /GLA, supporting folding handles | 850 mm x 210mm | 120 kg | 445/GLA |
| 24 | 445/PT, /P, /PL, floor supporting folding handles | 850 mm x 210mm | 120 kg | 445/PL |
| 25 | 445/PTA, PA, PLA, floor supporting folding handles | 850 mm x 210mm | 120 kg | 445/PLA |
| 26 | 445/TV, /V, /LV, supporting folding handle/shower splash-guard | 850 mm x 210mm | 120 kg | 445/LV |
| 27 | 446, /L, hanging up seats | 380 mm x 455 mm x 465mm | 150 kg | 446/L |
| 28 | 446/B, /BL, hanging up seats | 380 mm x 485 mm | 150 kg | 446/BL |
| 29 | 447, shower seat foldable | 380 mm x 400 mm | 150 kg | 447 |
| 30 | 447/B, shower seat foldable | 380 mm x 400 mm | 150 kg | 447/B |
| 31 | 447/BS, shower seat foldable | 530 mm x 400 mm | 150 kg | 447/BS |
| 32 | 448, /B, bath seat | 380 mm x max. 800 mm | 120 kg | 448/B |
| 33 | 487, /A, /B, /C, handles | 1170 mm | 150 kg | 487/C |

Department: MHS5 / vs
 Date: 2004-09-23

Page 3 of 3



CERTIFICATE

No. B 03 05 29615 007



Holder of Certificate: pba s.r.l.

Via Enrico Fermi n.1
36056 Tezze Sul Brenta (VI)
Italy

Certification Mark:



Product: Sanitary item

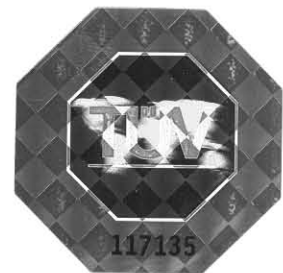
shower curtain rail 435-Nylon

The product was tested on a voluntary basis and complies with the essential requirements.
The certification mark shown above can be affixed on the product. See also notes overleaf.

Test report no.: 70024934

Date, 2003-05-05

A handwritten signature in black ink, appearing to read 'E. Kamin', is written over a large, faint circular stamp.



Page 1 of 2

Certificate

No.: B 02 12 29615 006



pba s.r.l.

Via Enrico Fermi n.1
36056 Tezze Sul Brenta (VI)
Italy

with production facility(ies)
29615

is authorized to label the following products with the
TÜV Mark E20.
Please see notes overleaf.

Product: Sanitary item

Model: Shower curtain rail
model 435-SS

Parameters:
nominal load: 650 N
dimensions: 800 mm x 350 mm
tube diameter: 32 mm
material: stainless steel (V4A)

The compliance of the above-mentioned product with the following essential requirements
was tested on a voluntary basis:

DIN 31000:1979

Report No: 70024932

Released with the above certificate number by the
certification body of TÜV PRODUCT SERVICE GMBH.

Department: FFMMCH1 / vs
Date: 17-Dec-2002



CERTIFICATE

No. B 03 05 29615 007



Model(s): 435 - Nylon

Parameters:
nominal load: 500 N
dimensions: 800 mm x 400 mm
material: tube Aluminium Ø 30,4 mm x 3,24 mm
with Nylon cover (outside Ø 36 mm)

Tested according to: DIN 31000:1979

Production Facility(ies): 29615

Certificate

No.: Z1 03 06 29615 008



PBA s.r.l.
Via Enrico Fermi, 1

I-36056 Tezze Sul Brenta (VI)

with the production facility(ies)
29615

is authorized to label the following product with the
"TÜV Mark P"
concerning the enclosed attachment. See also notes overleaf.

Product: Sanitary Aids for Disabled Persons

Model: Shower seats
Series 400-SS

| | | |
|--------------------|---------------------|--------------------------------------------|
| Parameters: | Dimensions in (mm): | |
| | Type : | 446-SS/B, 446-SS/BL |
| | Profile: | Ø 32 x 2, Ø 32 x 1,2 |
| | Dimensions: | length=3800, width=5200, height= 3900/4700 |
| | Material: | Stainless steel X2 CrNiMo 17-2-2 |
| | Nominal load: | 150 kg |

Remark: Item to use only together with Series 400-SS

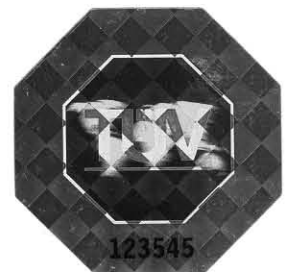
The compliance of the above-mentioned product with the following essential requirements was tested on a voluntary basis:

EN 12182:1999

Report No.: MEC 03028

Released with the above certificate number by the
Certification Body of TÜV PRODUCT SERVICE GMBH.

Department: TECIT / wk
Date: 06-05-2003



ATTES TATION ION



Product Service

Production facility inspection on the basis of the agreement in the testing and certification rules performed on July 28, 2005.

Licence holder:

P.B.A. S.R.L.
Via Enrico Fermi, 1
36056 TEZZE SUL BRENTA (VI)
ITALIA

This facility manufactures products certified by TÜV PRODUCT SERVICE. The requirements to a faultless and homogeneous fabrication as stated in the test and certification rules are met. The applied and documented quality assurance procedures were found suitable.

Production facility:

P.B.A. S.R.L.
Via Enrico Fermi, 1
36056 TEZZE SUL BRENTA (VI)
ITALIA

Equipment tested:

Sanitary items for disabled persons / Door and window braces

The production facility inspection was conducted according to the instructions of TÜV PRODUCT SERVICE. This certificate is valid for **12 months**, starting with the date of inspection.

Scarmagno, 26/08/2005

Ivana Coniglio
TÜV PRODUCT SERVICE

Ivana Coniglio



Product Service

Certificate

No.: Z1 02 12 29615 005

TÜV
PRODUCT SERVICE

pba s.r.l.

Via Enrico Fermi n.1
36056 Tezze Sul Brenta (VI)
Italy

with production facility(ies)
29615

is authorized to label the following products with the

TÜV Mark P.

Please see notes overleaf.

Product: Behindertenhilfen im Sanitärbereich
Sanitary Aids for Disabled Persons

Model: Bath tube handles and seats
Series 400-SS

Parameters: see enclosure

The compliance of the above-mentioned product with the following essential requirements
was tested on a voluntary basis:

DIN EN 12182:1999

Report No: 70032626

Released with the above certificate number by the
certification body of TÜV PRODUCT SERVICE GMBH.



Department: FFMMCH1 / vs
Date: 09-Dec-2002

TÜV PRODUCT SERVICE GMBH · Zertifizierstelle · Ridlerstrasse 65 · D-80339 München

ZERTIFIKAT ◆ CERTIFICATE ◆ CERTIFICADO ◆ CERTIFIKAT ◆ 認証証書 ◆ CERTIFICATE ◆ ZERTIFIKAT

Enclosure 1 to Certificate No.: Z1 02 12 29615 005

| Type | Dimensions | nominal load |
|-----------------------------------|-------------------------------|--------------|
| 422-SS, hand rail | 300 x 600 mm, Ø 32 mm | 150 kg |
| 422-SS/M, hand rail | 380 x 600 mm, Ø 32 mm | 150 kg |
| 422-SS/L, hand rail | 400 x 800 mm, Ø 32 mm | 150 kg |
| 422-SS/LA, hand rail | 480 x 1240 mm, Ø 32 mm | 150 kg |
| 424-SS, hand rail | 700 x 700 x 900 mm, Ø 32 mm | 150 kg |
| 424-SS/L, hand rail | 800 x 440 x 1240 mm, Ø 32 mm | 150 kg |
| 424-SS/LA, hand rail | 800 x 800 x 1240 mm, Ø 32 mm | 150 kg |
| 443-SS, hand rail | 1200 x 800 x 900 mm, Ø 32 mm | 150 kg |
| 443-SS/B, hand rail | 800 x 800 x 1240 mm, Ø 32 mm | 150 kg |
| 443-SS/B, hand rail | 800 x 1225 x 1240 mm, Ø 32 mm | 150 kg |
| 442-SS, hand rail | 800 x 800 mm, Ø 32 mm | 150 kg |
| 442-SS/M, hand rail | 1000 x 1000 mm, Ø 32 mm | 150 kg |
| 442-SS/L, hand rail | 1200 x 1200 mm, Ø 32 mm | 150 kg |
| 442-SS/B, hand rail | 1100 x 600 mm, Ø 32 mm | 150 kg |
| 442-SS/BL, hand rail | 1800 x 800 mm, Ø 32 mm | 150 kg |
| 440-SS, hand rail | 450 mm, Ø 32 mm | 150 kg |
| 440-SS/A, hand rail | 650 mm, Ø 32 mm | 150 kg |
| 440-SS/B, hand rail | 850 mm, Ø 32 mm | 150 kg |
| 440-SS/C, hand rail | 1050 mm, Ø 32 mm | 150 kg |
| 440-SS/D, hand rail | 1250 mm, Ø 32 mm | 150 kg |
| 427-SS, hand rail | 500 x 300 mm, Ø 32 mm | 150 kg |
| 423-SS/B, hand rail | 1450 mm, Ø 32 mm | 150 kg |
| 423-SS/BL, hand rail | 1650 mm, Ø 32 mm | 150 kg |
| 441-SS, handle | 600 mm, Ø 32 mm | 120 kg |
| 441-SS/L, handle | 700 mm, Ø 32 mm | 120 kg |
| 441-SS/LL, handle | 850 mm, Ø 32 mm | 120 kg |
| 441-SS/A, handle with armbearing | 600 mm, Ø 32 mm | 120 kg |
| 441-SS/LA, handle with armbearing | 700 mm, Ø 32 mm | 120 kg |



Enclosure 2 to Certificate No.: Z1 02 12 29615 005

| Type | Dimensions | Nominal load |
|------------------------------------|------------------|--------------|
| 441-SS/LLA, handle with armbearing | 850 mm, Ø 32 mm | 120 kg |
| 445-SS/T, handle | 600 mm, Ø 32 mm | 150 kg |
| 445-SS, handle | 700 mm, Ø 32 mm | 150 kg |
| 445-SS/L, handle | 850 mm, Ø 32 mm | 120 kg |
| 445-SS/TA, handle with armbearing | 600 mm, Ø 32 mm | 150 kg |
| 445-SS/A, handle with armbearing | 700 mm, Ø 32 mm | 150 kg |
| 445-SS/LA, handle with armbearing | 850 mm, Ø 32 mm | 120 kg |
| 447-SS/B, shower seat | 430 mm | 150 kg |
| 487-SS, shower rail | 650 mm, Ø 32 mm | 150 kg |
| 487-SS/A, shower rail | 850 mm, Ø 32 mm | 150 kg |
| 487-SS/B, shower rail | 1050 mm, Ø 32 mm | 150 kg |
| 487-SS/C, shower rail | 1250 mm, Ø 32 mm | 150 kg |

Remark:

All products are made of stainless steel (V4A)

Department: FFMMCH1/ vs

Date: 09-Dec-2002

